

- 1001 A pair of porcelain figure table lamps with shades



- 1002 A mahogany stationary box



- 1003 A Victorian inlaid accordion with a maker's label for W. Winrow & Son, Nottingham.



- 1004 2 volumes of 'The Works of Charles Dickens' 1890



- 1005 A pair of blue and white musician figures, 20cm



- 1006 2 Belleek vases and a Belleek photo frame



- 1007 A Victorian silver plate on copper kettle on stand



- 1008 A Miniature Breton style dresser, 35 x 23 x 13cm



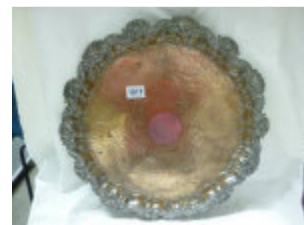
- 1009 4 Royal Worcester egg coddlers, a Royal Worcester pin dish and a Royal Worcester pot



- 1010 A large Chinese style lamp base a/f and a Chinese style cylinder vase



- 1011 An Ornate silver plate on copper footed tray (would benefit from re-plating) 46cm diameter



- 1012 3 porcelain clown figures



- 1013 2 four bottle cruet sets



- 1014 A pair of ornate Victorian brass double wall mounting candleholders



- 1015 A tall cranberry glass spill vase, 58cm



- 1016 4 Beatrix Potter money banks by T M & C F W & Co., Ltd.



- 1017 "The New Scientist" microscope in original box



- 1018 4 Border Fine Arts Beatrix Potter money banks and a figure



- 1019 A quantity of 25" Victorian polyphon discs



- 1020 A pair of 5 branch candelabra on marble bases



- 1021 A quantity of framed prints including a telegraph from the Queen



- 1022 A Wooden inkstand and a silver plated inkstand



- 1023 24 pieces of Aynsley fruit pattern tea ware



- 1024 An oak three bottle tantalus with key, a/f



- 1025 6 Danbury Mint crystal glass animal paperweights



- 1026 A football bearing the signatures of George Best, Dennis Law, Willie Morgan and 6 others



- 1027 A Murano glass cockerel, End of day glass fish and vintage soda syphon



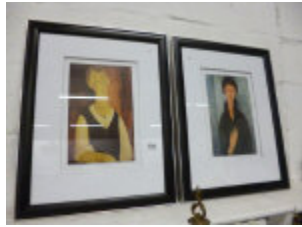
- 1028 2 portrait prints of ladies



- 1029 A set of 3 Poole pottery graduated dolphins



- 1030 2 framed and glazed Modigliani prints, Man in waistcoat and Girl with blue eyes



- 1036 A framed and glazed Victorian samplers by Emma Wilson aged 9, 1863



- 1031 A large Soapstone carving depicting peacock



- 1037 3 Beatrix Potter musical figures



- 1032 6 Beatrix potter salt and pepper pots an egg cup and a jam pot



- 1038 A pair of leaded and stained glass panels being silhouetted of a lady and gentleman



- 1033 A quantity of Royal Albert Dafodil pattern teaware being 12 tea plates, 12 saucers, 8 tea cups, 2 sugar bowls, 2 milk jugs and 2 large plates



- 1039 A 3 bottle tantalus with key (all bottles good)



- 1034 12 volumes of Winston Churchill "The Second World War"



- 1040 A silver plated cigarette box, wine coaster, cruet stand and egg stand



- 1035 A Victorian oil lamp on pot base



- 1041 A Beswick 'Fern' vase



- 1042 A pair of 5 lamp ceiling lights with Tiffany style glass shades



- 1043 3 framed and glazed engravings



- 1044 A Duckham's thermometer sign



- 1045 A large modern yachting print



- 1046 3 lidded copper pots, 2 having Guernsey crests



- 1047 2 Blue and white Imari bowls



- 1048 2 football albums, 2 magazines and 2 programmes



- 1049 3 Border Fine arts Beatrix Potter money boxes and a watering can



- 1050 A pair of Roy Fisk wall plaques of Lincoln

- 1051 2 Victorian oil lamps on cast bases with brass fonts and white globe shades



- 1052 3 pottery jugs including a Royal Doulton



- 1053 An oak mantel clock



- 1054 A large alabaster lamp shade with brass fittings, small restoration



- 1055 An oak Arts and Crafts occasional table



- 1056 A Metronome and a barometer



- 1057 A German porcelain headed doll with composition body marked A M, Germany 391/9K



- 1062 A Moorcroft table lamp with shade a/f



- 1058 6 items of china including 2 Imari bowls (bowls chipped)



- 1063 A Victorian accordion labled Pancotti Antonie E Figlio, Italy

- 1064 A pair of vintage leather riding boots with wooden inserts



- 1059 A vintage teddy bear and 5 die cast models



- 1065 4 oil lamp fonts (1 a/f) and an oil lamp base



- 1060 A large Jade carving of a bird and flora



- 1066 An ornate brass inkstand

- 1067 A Tunbridge Ware jewellery box

- 1068 A Sennheiser microphone



- 1061 A large pair of German beer jugs (one has a chip on spout)



- 1069 An old leather punch bag



- 1070 An oak collector's chest containing a large collection of Victorian 3 D viewer cards



- 1076 An oak barley twist leg table



- 1077 A pottery jug decorated with birds



- 1071 A pair of German Mettlach vases



- 1072 3 Mason's Chartrause pattern jugs and a dish



- 1078 A Whitefriars Powell style art work vase



- 1073 6 gilt framed portrait prints



- 1074 A Royal Albert Berkeley pattern tea set, 22 pieces



- 1079 5 matching Victorian tiles and one other



- 1075 A Deco mantel clock



- 1080 3 Royal Copenhagen plates, 1918, 1919 and 1925



- 1081 A bronze bull



1082 An Orium Art Nouveau pewter lidded tureen



1083 A jewellery box with secret drawer



1084 2 carved African figures



1085 A Victorian copper kettle



1086 A pair of Victorian lustre jugs



1087 A Victorian brass photo frame



1088 12 Royal Grafton Christmas plates, 1976-1987 with certificates



1089 A boxed Palitoy battery operated fork lift truck (box distressed)



1090 A boxed tin plate Bandai 4077 Lincoln fire chief car



1091 3 metal wall lights and other items



1092 A pair of Victorian gilded rococo style wall sconces, 18" tall x 14" wide



1093 A quantity of Subbuteo sets and teams (not checked for completeness), 3 shelves



1094 A mixed lot of oil lamp shades, chimneys etc



- 1095 A large wine stug marked Cobbold and sons, Ipswich



- 1102 5 pairs of old Oriental embroidered slippers



- 1103 A brass USA advertising spittoon, Redskin Brand Chewing Tobacco



- 1096 5 Stieff teddy bears



- 1097 A vintage cast iron ship's wheel table lamp



- 1104 A very rare slab seal wine flagon, Walter & John Derry, Old City Arms Hotel, 220, High Street, Lincoln, 1879-1882, a/f



- 1098 3 Wade Nat West pigs



- 1105 2 Murano glass clowns and a clown vase



- 1099 An Aynsley fruit decorated tea set



- 1106 A pair of early Cloissonne vases



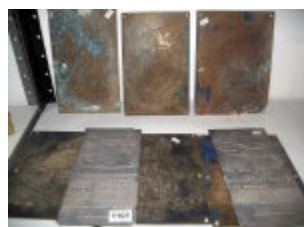
- 1100 A Nikon camera and a Minolta camera



- 1107 4 items of carnival glass including large bowls



- 1101 6 old printing plates including Louis Wain cats and 2 aluminium car advertising plates



- 1108 4 items of cranberry glass



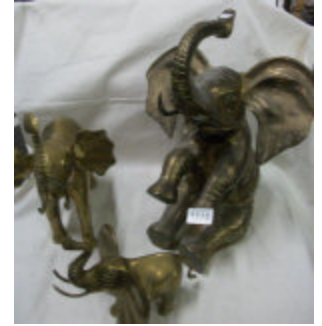
- 1115 A rare Staffordshire cat on blue/green base



- 1109 A Tony Wood chicken teapot



- 1116 3 brass elephants



- 1110 A Hornby tin plate railway station



- 1117 A Lowerdown pottery butter dish and mug attributed to David Leach and a Carlos-Van-Reigeburg-Versluys bowl



- 1111 A mixed lot of kitchenalia including scales, choppers etc.



- 1118 A pair of bisque figures



- 1112 A brass bugle and a brass horn



- 1113 A Victorian copper samovar urn



- 1119 4 old engravings of Lincoln



- 1114 A stoneware harvest jug with pewter lid



- 1120 A coromandel desk tidy



1121 An early Derby pottery 'Bullrush' vase



1127 An original art work watercolour and pen by John Harrold



1122 A Victorian tea caddy, a/f



1128 An oak desk stand with inkwells



1123 A W. Bombs enamel sign and a Mauchlin ware money box, Morecombe



1129 A carnival glass dish and one other



1124 2 glass fly catcher lamp shades



1130 A 24 piece Royal Albert old country roses tea set



1131 A Hornby '0' gauge train set and quantity of Bayko



1125 A large early Victorian copper jug



1132 An old boxed Scalextric



1126 4 items of glassware including a posy vase



1133 A tool box containing approximately 30 old tools



1134 A copper coal scuttle



1135 A copper and brass marine water carrier



1142 A set of early cow bells



1143 A metronome



1136 A pair of Victorian brass Church candlesticks



1144 A mixed lot of cigarette and other collector's cards



1137 A Vintage automaton bird cage musical jewellery box



1145 2 bus stop signs, 3 cigarette stubbers and 2 transport step lights



1138 A pair of Victorian brass fire dogs with Wedgwood plaques (one a/f)



1146 2 Meccano instruction books, No. 1 and 00 to 4 and 3 Hobbies hand books 1938 and 1956



1139 A vintage chimpanzee toy



1147 2 1960's Foster's pottery, Redruth, vases



1140 A 21 piece Shelley tea set

1141 A Bryan's Dictionary of Painters of Engravers, 1878, a/f



1148 2 boxes of black and white magic lantern slides, approximately 120.



1149 The Capstan Crankshaft alignment indicator



1154 A glass lemonade jug with ice compartment and plated top



1150 An old school style hand bell



1155 2 concrete elephants



1151 An Art Deco style table/plant stand



1156 A leather gun holster



1157 A pair of marble bookends



1152 A carved wood candlestick



1158 A quantity of LP records including Elvis



1159 A Victorian hand oil lamp and a Sheffield plated jam dish



1153 4 books including 'Royalties of the World' and 'Winston Churchill'



1160 A Victorian Stilton dome



1161 A leather 'Leg of Mutton' gun case



1162 An old monocular and a pair of 1944 Air ministry binoculars



1163 A pair of green marble urns



1164 A green glass and brass table centrepieces (some trumpets a/f)



1165 3 books including 'A Village Lost and Found' by Bryan May and Elena Vidal with stereo viewer and cards



1166 An Eccles brass miner's lamp



1167 A pair of Mason's table lamps



1168 4 Terracotta army figures and 2 horses



1169 22 pieces of Royal Crown Derby tea ware



1170 7 Stieff toy animals



1171 An Austrian Amphora vase



1172 A pair of cased binoculars, Taylor-Hobson, 1943



1173 2 volumes of Society pics drawn by George Du Maurier and one other book



1174 A Horse measuring stick marked Arnold & Sons, a/f



1175 A pair of wall lights with beaded shades



1176 A Chinese tea set



1181 A Victorian porcelain tea for 2 set on tray



1182 2 Geoffrey Farnol books 'The Broad Highway' Illustrated by C E Brock and 'The Money Moon' pictured by A I Keller



1177 A large pewter jug a/f and 3 walking sticks



1183 A tall glass dome with base



1184 6 Royal Doulton character jugs being Sairey Gamp, Sam Johnson, Mine Host, Apothecary, Gaoler and the Gardener



1185 A lidded Cloissonne bowl



1178 A mixed lot of postcards, Mainly railway



1186 A pair of Victorian nodding figures



1179 7 Stieff animals



1187 A Sylvac Henry VIII character jug, Sylvac cabby jug and a Goebel monk jug



1180 2 City of Lincoln Police helmets (including Parade Helmet) and one other



1188 2 Coalport Churches (1 a/f) and a fairing



1189 A bronze nude figure



1197 A complete set of 110 Arnath Tobacco Co., Southern football photocards



1190 5 Royal Doulton character jugs being Falstaff, Simon Cellarer, Bacchus, Bootmaker and the Trapper



1198 A mixed lot of old copper coins etc



1191 A brass mounted jewellery box



1199 A mixed lot of crowns (approx. 30)



1192 5 Royal Doulton character jugs being Jonny Jon, Simon Cellarer, Old Charley, Jester and Toby Philpots



1200 A mixed lot of old English coins etc.



1193 A quantity of Ruston's traction engine plans dated for 1920's



1201 A box and tin of English coins etc.



1194 A pair of silver sugar tongs and a plated ladle



1202 A box and tin of English coins etc.



1195 3 silver napkin rings and a silver pill box



1203 A quantity of old coins etc



1196 A mixed lot of foreign coins etc



1204 A box and tin of Foreign coins etc.



1205 A cut glass celery vase



1210 A boxed set of Terracotta army figures



1211 2 Victorian pot lids a/f and a Crystal Palace souvenir pot



1212 An acid etched wine flute



1206 A tin plate Disney money box



1213 5 Old postcards including 'The Terrible railway accident, Grantham' and flood at Walsall station



1207 A pair of Bisque figurines



1214 4 Royal Doulton Cricketer character jugs being Dickie Bird, W G Grace, Denis Compton and the Hampshire cricketer



1208 A Victorian Staffordshire matchstriker a/d



1215 A Belleek vase (Brown mark)



1209 A Benham and Froud copper jelly mould



- 1216 A porcelain cherub spill vase



- 1217 A pair of Victorian china jugs



- 1218 3 Kirkham pottery Toby jugs and a Royal Doulton Leprechaun jug



- 1219 3 Kirkham Pottery toby jugs and a Doulton Leprechaun jug



- 1220 A concertina jewellery box and contents



- 1221 3 Miniature hand painted character and a teapot



- 1222 A pair of small Victorian pug dogs



- 1223 A silver plated 4 faced Buddha head



- 1224 5 Royal Doulton character jugs being The Poacher, Old Charley, Robin Hood, Sancho Pancho and North American Indian.



- 1225 A 1978 Commonwealth of the Bahamas \$10 proof coin with certificate



- 1226 A Turks & Caicos Island 1979 10 crown proof silver coin and 2 bronze Princess Anne wedding coins



- 1227 6 consecutive number £1 notes, 10 other £1 notes and 2 10/- notes



- 1228 5 UK proof coins sets and a 1974 India set



- 1229 6 pairs of proof silver coins for Mongolia, Venezuela, Zaire, Pakistan, Malaysia and Sudan



- 1230 12 silver coins from the conservation coin collection with certificates



- 1231 2 cased sets of Pobjoy Mint silver Isle of Man coins



1232 3 cased silver coins



1238 2 Lincoln books and one Horncastle



1233 A British Virgin Islands 1975 proof coin set



1239 An 1847 volume of 'Household Surgeon' by John F South



1234 A small quantity of old coins and tokens



1240 2 Timex wristwatches including chronograph



1235 the 1977 Queen Elizabeth 25 dollar silver coin of the Cook Islands



1241 A beaded necklace and bracelet



1236 The Cayman Islands 1975 Fifty dollar Six Queens silver coin



1242 A vicorinox Swiss army wristwatch



1237 2 Victorian silver coins, An 1888 dollar and 4 other old coins



1243 A pair of Vintage whist markers



1244 A City of Lincoln Hackney driver ID badge



- 1245 A rose pendant and a silver cross on chain



- 1246 A Deco 9ct gold sapphire and diamond ring



- 1247 A 9ct gold opal and garnet ring



- 1248 A 9ct gold and garnet brooch



- 1249 A silver pill box, silver locket and articulated enamel fish



- 1250 A new Stauer Noir Gent's wristwatch



- 1251 A quantity of collector's coin sets, mainly 1980's



- 1252 A collection of badges on a belt including 2 shake helmet badges



- 1253 A mixed lot of old coins etc



- 1254 A mixed lot of old coins etc



- 1255 A folder of coins including some silver



- 1256 A cased Chinese calligraphy set



- 1257 A Carlton ware novelty cruet set



- 1258 A glass inkwell with silver top



1259 A cranberry and vaseline glass vase



1267 An Irish Parian Donegal porcelain vase



1260 A Guinness toucan jug and a Guinness ashtray



1268 3 Wedgwood Keith Murray Deco tankards



1261 A small glass dump



1269 A hallmarked silver gravy boat



1262 A pair of glass dumps



1270 A silver double ended spirit measure



1263 A sailor tobacco jar and a sailor ashtray



1271 2 silver backed brushes, mirror and comb



1264 A pig matchstriker, bird matchstriker and sheep figure



1272 A Victorian milk glass epergne centrepiece



1265 An Early Worcester teapot, a/f

1266 An 18th century pearlware coffee pot, missing lid



1273 A vaseline glass oil lamp shade a/f



1274 A Victorian wind up boudior clock



1275 A frosted glass oil lamp shade



1276 A Cranberry glass lamp shade



1277 5 Royal Doulton character jugs being Charles 1, St. George, Oliver Cromwell, Nelson and Henry VIII



1278 A rare Louth pottery WW2 carousel



1279 2 Royal Doulton character jug being George Tinworth and Mr Pickwick together with one other being Uriah Heap.



1280 A Trench art smoker's stand



1281 6 Royal Doulton character jugs being Rip Van Winkle, American Indian, Viking, Robin Hood, Veteran Motorist and Robinson Cruseo



1282 A 9ct gold gate bracelet



1283 A 9ct gold cross



1284 A gold ring



1285 A 1960's 'Space' pocket watch in case and in working order

1286 A small brass 4 faced Buddha



- 1287 2 silver vesta's (some dints)



- 1295 A cased Longines wristwatch with marking of King Hussein of Jordan



- 1288 A WW1 Bayonet



- 1296 A silver spoon and silver sugar tongs



- 1289 An enamel sweetheart and other military badges



- 1297 A cased limited edition silver Concorde Ingot and Concorde first day cover



- 1290 An army general services pocket watch engraved G S T P N.39



- 1298 An old dagger in sheath



- 1291 A silver cigarette case with engraved initials



- 1299 A continental silver pill box



- 1292 A quantity of pre 1946 silver coins



- 1300 6 Mother of pearl tea spoons



- 1293 A dagger in sheath



- 1301 A silver bracelet set pink stones



- 1294 An old meat skewer with silver top and band and antler horn handle



- 1302 A set of 6 Wade monks



1303 A necklace and a bracelet



1304 9 Commemorative coins



1305 10 Commemorative coins



1306 A Jade emblem/pendant



1307 2 necklaces



1308 A silver pocket watch and one other



1309 3 silver napkin rings



1310 An RAC badge



1311 3 cased photo miniatures



1312 A mixed lot including agate pendant, whistle, needlecase etc



1313 3 propelling pencils and a Swiss enamel city scene bracelet



1314 An ornate silver gilt floral brooch and other costume jewellery



1315 A Tissot Art Deco oblong watch, an Eterna-matic watch movement and a watch/map distancer



1316 7 Royal Doulton 101 Dalmation figures, 1 a/f



1317 5 silver topped jars



1318 A Mappin and Webb silver plated epergne base



- 1319 4 silver collared bottles (1 a/f) and one other



- 1320 A pair of Art Nouveau pewter vases



- 1321 An old leather shot flask



- 1322 A large ribbed glass bottle with silver top



- 1323 A cut glass oil/vinegar decanter



- 1324 A pair of silver rimmed salts



- 1325 A silver topped bottle (no stopper), a silver cap and a silver bottle collar



- 1326 A Royal Doulton figurine 'Hannah'



- 1327 A Royal Doulton figurine, 'Fair Lady'



- 1328 A nude figure



- 1329 A Goebel Robin



- 1330 3 Royal Doulton character jugs being Shakespeare, Falstaff and Bacchus



- 1331 A carved wood
Lighthouse clock



- 1332 A continental
porcelain girl on shell
figure, (damage to
fingertips and
flowers)



- 1333 A carved ivory tube,
a/f



- 1334 6 Royal Doulton
character jugs being
The Trapper, The
Walrus and the
Carpenter, The
Falconer, Auld Mac
(1935), Gone Away
and Granny



- 1335 A Royal Crown Derby
bird group, Aynsley
Blue tit and a John
Beswick Wren.



- 1336 2 carved stone lions,
3 wise monkeys and
one other item



- 1337 An early 20th
century brass tank
made by an
employee of Ruston
Hornsby Lincoln and
a Ruston box



- 1338 6 Royal Doulton
character jugs being
Robinson Crusoe,
Sancho Pancho, The
Cardinal, Merlin,
Beef Eater and
Sairey Gamp



- 1339 A jade and silver
pendant



- 1340 A jade and silver
pendant



- 1341 A miniature silver
teapot



- 1342 A silver cigarette
case, Chester
hallmark



- 1343 An old cigar cutter
on watch chain



- 1344 A 9ct gold
sweetheart brooch
and pair of earrings



- 1345 A stone set silver
ring



1346 A Cameo brooch and a large stone set brooch



1354 A 1909 gold Sovereign



1347 A 9ct gold chatelaine, a/f



1355 A 1908 gold half Sovereign



1348 A 14k stick pin and a pair of earrings



1356 An 1892 gold Sovereign



1349 A 9ct gold bangle (20 grammes)



1357 A 1906 gold half Sovereign



1350 A silver ring, forget me not brooch and 2 pendants



1358 An 1889 gold Sovereign



1351 A 9ct gold locket on chain (9gms)



1359 A 1907 gold half Sovereign



1352 A 9ct gold chain, pendant and earrings (8gms)



1360 A 1904 gold Sovereign



1353 A 9ct gold ring set red stone (size Q)



1361 A 1902 gold half Sovereign



1362 A 1968 gold sovereign in 9ct gold brooch mount



1370 An 18ct rose gold bar brooch set diamonds



1363 An 1890 gold sovereign in 9ct gold pendant mount



1371 A 9ct gold ring and earrings set opals (Ring size M)



1364 A 9ct gold charm bracelet with 17 charms including Victorian sovereign (130 grammes)



1372 A silver tie pin and cuff links embossed with bulls



1365 A Large Cameo in 9ct gold mount



1373 A 9ct gold pendant set seed pearls and garnets



1366 A pair of 1910 gold Sovereign in 9ct gold cuff links



1374 A 9ct gold ring set green stones (size I)



1367 A 9ct gold garnet cluster ring (size L)



1375 A 9ct gold red stone cluster ring (Size K)



1368 A 1908 gold half sovereign in 9ct mount, (size P)



1376 A 9ct gold red stone cluster ring (Size K)



1369 A 9ct gold pendant set red stone



1377 A 9ct gold Pendant



1378 A pair of 9ct gold cuff links



1386 A silver bracelet



1379 A 9ct gold cameo ring (Size L)



1387 5 Commemorative coins



1380 A pendant on chain and one other



1388 A silver bracelet



1381 A pair of silver sugar nips



1389 6 White metal coins



1382 A silver bangle



1390 A gold wedding band



1383 A silver bracelet



1391 An 18ct gold ring set ruby and diamonds



1384 A Victorian watch key as a gun



1392 A superb quality enamelled and articulated fish pendant and earrings



1385 A Victorian 1896 crown



1393 A silver ring set large stone



- 1394 A silver roller skate pin cushion



- 1395 A pair of silver plated grape scissors



- 1396 An Oddfellows medal for Gladys Archer, Grantham



- 1397 2 medals and an enamel badge



- 1398 A George V Bravery in the Field Medal to GNR J Troll RFA



- 1399 A Victorian South Africa Transvaal Cape Colony medal to Pte d Jeffrey K RRC



- 1400 An Elizabeth II Korea medal to Sgt W Tait, Int Corps.



- 1401 A Campaign Service Medal, Northern Ireland to BDR C Newson, RA



- 1402 A George VI Malaya medal to Pte E Tatten, RAOC



- 1403 A George V Meritorious service medal, un-named



- 1404 A Victoria volunteer Service long service medal



- 1405 A 1930-31 North West Frontier India medal, name on rim unclear



- 1412 A Royal Worcester figurine 'Invitation'



- 1406 A Sharp's Pixley & Co., one ounce fine silver ingot, 999.0



- 1413 A Royal Worcester figurine 'Sincerity'



- 1407 2 Royal Doulton Brambley Edge figure being Heading Home and Shell



- 1414 A Royal Worcester figurine 'Sunday Morning'



- 1408 4 Beswick Beatrix Potter figures being Mrs Tiggy Wiggy, Mrs Ribby, Peter with postbag and Tom Kitten in rockery



- 1415 4 Royal Doulton Gemstone series figurines



- 1409 4 Royal Doulton character jugs being D'Artagnan and the 3 Musketeers



- 1416 A Royal Doulton pretty ladies figurine 'Thinking of You'



- 1410 A Green pottery jug with grotesque style figure on each side



- 1411 A Murano glass decanter attributed to Flavio Puli



1417 A Royal Worcester
HM Queen Elizabeth
II Diamond wedding
figure



1424 A jewel box and
contents



1425 A silver desert
spoon, Art Nouveau
silver handled knife
and 3 other items



1418 A mixed lot of
costume jewellery



1426 2 WW1 1914
Christmas tins



1419 A mixed lot of vintage
costume jewellery



1427 A silver stone set
bracelet



1420 A set of 12 Punch
and Judy coloured
magic lantern slides



1428 A box of military
buttons, badges and
Trench art
collectables etc.



1429 10 silver plated
napkin rings



1421 A Coronet 3D
bakelite viewer



1430 6 Franklin White
cheques



1422 A mixed lot including
eye baths



1431 A silver bracelet set
grey stones



1423 A quantity of lighters
including Trench Art



- 1432 A mixed lot of coins and medals etc



- 1437 A Royal Doulton figurine, The Old Balloon Seller, HN1315



- 1433 A quantity of deeds and related legal paperwork relating to a conveyance document dated 9th Feb 1875



- 1438 A Royal Doulton figurine, Old King Cole, HN2217



- 1434 A Royal Doulton figurine, The Wayfarer, HN2362



- 1439 A Royal Doulton figurine, The Foaming Quart, HN2162



- 1435 A Royal Doulton figurine, The Puppet Maker, HN2253



- 1440 A Royal Doulton figurine, The Helmsman, HN2499



- 1436 A Royal Doulton figurine, Silks and Ribbons, HN2017



- 1441 A Royal Doulton figurine, Falstaff, HN2054, 1949



1442 A Royal Doulton figurine, Good King Wenceslas, HN2118



1448 A Royal Doulton German Shepherd



1443 A Royal Doulton figurine, The Mask Seller, HN2103



1449 A pair of Royal Doulton character jugs being Laurel and Hardy



1450 A Royal Doulton Double sided Toby Jug being King and Queen of Diamonds



1444 A Royal Doulton figurine, Friar Tuck, HN2143



1451 A Royal Doulton Toby Jug Winston Churchill and a Royal Doulton character jug also Winston Churchill



1445 A Royal Doulton horse



1452 A Royal Doulton Double sided Toby jug being The Judge and The Thief



1446 A Royal Doulton horse



1453 A Royal Doulton two face character jug being Sir Henry Doulton and Michael Doulton and a Royal Doulton character jug being Sir Henry Doulton



1447 A Royal Doulton border collie



1454 A Royal Doulton Character jug being Minnie the Minx



- 1455 A Royal Doulton Character jug being Desperate Dan



- 1461 An Italian figurine of a girl with a muff



- 1456 A Royal Crown Derby 'Old Imari' Dish



- 1462 A pair of carved stone Dogs of Foo



- 1457 A silver top bottle (no stopper) a silver top bottle a/f and a quantity of stoppers etc



- 1463 A mixed lot of costume jewellery



- 1458 2 Goebel figures, a Goebel rabbit and a Wedgwood Wren



- 1464 Approximately 190 old postcards, Humorous, Geographic etc



- 1459 A NAO figurine of a girl with a puppy



- 1465 A Greyhound drawing "Chips" Initialled P H



- 1460 A NAO figurine of a girl with a bird



- 1466 A 1939 Meinkampf Adolph Hitler hardback, English first edition, 568 pages



- 1467 A silver bangle, necklace and 2 brooches



- 1468 2 lockets, a chain, brooch and earrings



- 1476 A Citron Quartz wrist watch, Spirit of Adventure wrist watch and a Sekonda ladies wrist watch



- 1469 A ladies silver fob watch



- 1477 9 silver spoons (130 grammes)



- 1470 A ladies silver fob watch



- 1478 A Garanta air pistol gat gun



- 1471 A silver chain, fob and 2 Victorian florin's



- 1479 A quantity of costume jewellery etc.



- 1472 10 white metal florins



- 1480 5 bracelets and a ring



- 1473 A quantity of old coins etc.



- 1481 7 Scottish silver claw brooches



- 1474 A V T G Radio wristwatch



- 1482 7 old pens



- 1475 An Omega Sea Master wristwatch, a/f



- 1483 A mixed lot of jewellery



1484 A mixed lot of jewellery including brooches etc



1492 A mixed lot of costume jewellery



1485 A mixed lot of jewellery and watches etc



1493 A mixed lot of costume jewellery



1486 A Victorian card case, snuff box, pill box and 2 others



1494 An Oriental pot with Dog of Foo on lid and handles (Possibly Jade)



1487 A silver pocket watch a/f



1495 A large soapstone carving



1488 A vintage 'Tremellan' pocket watch



1496 A Clarice Cliff bowl, a/f and a Clarice Cliff cup and saucer



1489 An Omega Seamaster wrist watch



1497 A Victorian Holloway's Ointment pot lid and pot



1490 6 old stick pins



1498 A vintage RAF Comfort's fund doll



1491 A mixed lot of gold and other jewellery



1499 An Onyx lidded bowl, ashtray and egg



- 1500 A mixed lot of costume jewellery etc



- 1508 An 1809 Guide to Domestic Happiness and an 1833 Treatise on Practical Mensuration



- 1501 A HM silver wristwatch in working order



- 1509 A 1749 edition of A Complete System of Experienced Improvements made on sheep, glass lambs and house lambs



- 1502 A mixed lot of commemorative crowns



- 1510 An 1808 Poetical works of William Falconer and a 1775 Works of Henry Fielding



- 1503 A Vintage Doctor's visiting case with bottles, a/f



- 1511 A rare 19th century volume entitled "Illustrations to Waverley Novels"



- 1504 A mixed lot of costume jewellery



- 1512 A brass powder flask



- 1505 A mixed lot of costume jewellery including wrist watches and silver chain



- 1513 An old percussion pistol



- 1506 A Royal Crown Derby 'Old Imari' vase and knife



- 1514 An old percussion duelling pistol



- 1507 A large collection of badges



- 1515 A Bayard carriage clock (not working)



1516 A Clarice Cliff 'Celtic Harvest' Bowl



1517 A Clarice Cliff vase



1518 A Clarice Cliff Bizarre vase



1519 A large quantity of mixed stamps



1520 A large quantity of mixed stamps



1521 A silver bracelet



1522 A silver belt, J & R C Chester 1870



1523 A silver inkwell, Walker and Hall, Sheffield, 1907



1524 2 brass Trench art model step ladders



1525 A pair of gold on silver pince nez and one other



1526 2 Advertising paperweights being Simplex Jack and Cominco sinc elephant fertilisers



1527 A Goodyear Tyre ashtray and a quantity of vintage car maintenance discs



1528 A Portrait of a man on ivory, a/f



1529 A portrait of a lady on ivory



1530 A jewellery box and contents



1531 A large quantity of Merchant Sailor ephemera including medal and diary



1532 A pair of Victorian Child's leather gloves and shoes



1533 A quantity of jewellery boxes including lacquered



1534 A book entitled 'Poems from the Desert' with verses by members of the 8th army with a facsimile signature of Montgomery



1535 A mixed lot of costume jewellery including 4 silver brooches



1536 A Vulcan car mascot



1537 A cockerel car mascot



1538 A Spirit of Ecstasy kneeling lady mounted on marble base



1539 A vintage French travel clock



1540 A rare Ilford Advocate 35mm camera with die cast aluminium ivory coloured body (The first 35mm camera to be made in England)



1541 An Eastern Prayer wheel



1542 An ivory page turner, string box and carved plaque



1543 A Jade Geisha figure



1551 8 Dinky military vehicles and 2 others



1552 Approximately 45 British military cap badges



1544 A large collection of mainly glamour and theatrical postcards



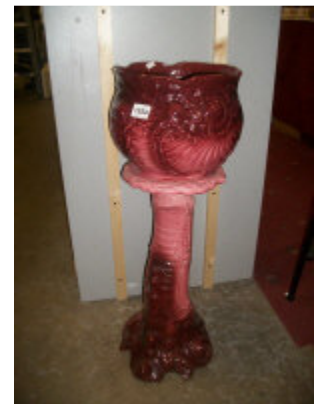
1553 A Dinky Bulldozer and other items



1545 A large quantity of postcards



1554 A jardiniere on stand



1546 A box of miscellaneous die cast cars including Noddy



1555 A Scalextric '50' set



1547 A box of Miscellaneous die cast Thomas Tank and BoB Builder toys



1548 A tin plate friction American car



1556 A boxed 1960's Lego 810 set (Completeness unknown)



1549 A quantity of 1960's plastic Thunderbird and other toys



1550 A quantity of WW1 military badges and buttons



1557 A mahogany drum table



1563 A large collection of model cottages



1564 An oak cantilever sewing box



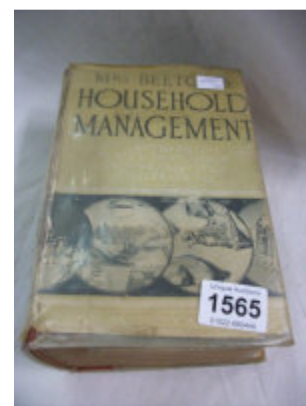
1558 A mahogany occasional table



1559 A large collection of interesting cards



1565 A Mrs Beeton's Household Management



1560 A turn and slip artificial horizon indicator



1566 7 Beatle's LP records including Mono and 3 45rpm records



1561 An oak tripod tip top table



1567 5 Minton blue and white animal print tiles



1568 A vintage folding photo frame



1562 15 old films including 35mm



1569 A jug, basin and chamber pot



- 1570 A vintage expanding glove box complete with original glove stretchers



- 1571 A large aluminium Daimler bus/lorry badge



- 1572 Shakespeare's comedy 'As You Like It' with illustrations by Hugh Thomson



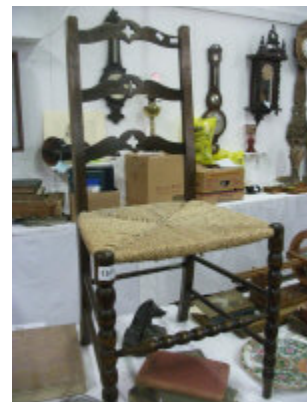
- 1573 'The School for Scandal' by Richard Brinsley Sheridan, Illustrated by Hugh Thomson



- 1574 A vintage walking doll



- 1575 An oak country chair



- 1576 Wild Flowers Month by Month by Edward Step FLS 1905 and Manual of Heraldry edited by Francis J Grant WS 1914



- 1577 A carved model figure of a boar



- 1578 The Gardener's and Poultry keepers guide and catalogue, W Cooper, Circa 1900 and 'Fortunes from Eggs' Circa 1910



- 1579 A Chinese Famille Rose plate



- 1580 An LMS timetable and a Report on Railway and Canal bills



- 1585 An oak folding cake stand



- 1581 An old measure and one other item



- 1586 4 books being Martin Chuzzlewit, Lorna Dune 6th Edition, Adventures of Robinson Crusoe and Uncle Tom's Cabin 1906.



- 1582 A white jug and bowl set, a/f



- 1587 An album of postcards



- 1583 'Our Rarer British Breeding Birds' Circa 1900 and a 1961 Field guide to birds of Britain



- 1588 An 1889 Darwin's Journal,. An 1893 Richard Tregell's Adventures in the West Indies and a 19th century Voyages of Sir John Maundeville



- 1584 An old 'rolling' canvas bus direction sign



- 1589 An inlaid clock with key



1590 A Victorian cast and brass cue holder



1597 "Gross Deutschland" 1940 book of Nazi achievements, fully illustrated



1591 2 boxes containing approximately 75 coloured magic lantern nursery rhyme slides



1598 An oak country chair



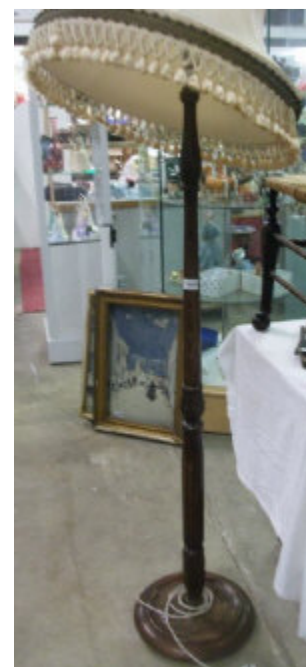
1592 An album containing approximately 250 mainly black and white postcards



1593 A Victorian microscope by r & J Beck, London



1599 A standard lamp with shade



1594 A late 19th century Linear microscope



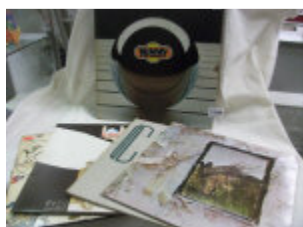
1595 A wind up picnic gramophone by Decca



1600 An old walking cane and a silver mounted walking stick



1596 The Who boxed 'Tommy' LP with book and 4 Led Zeppelin LP's



1601 A silver mounted walking stick and a walking cane



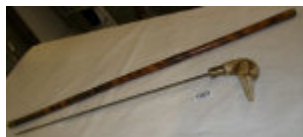
1602 A Royal Inniskilling Fusilier's silver topped walking stick



1603 A horn handled walking stick with unmarked white metal collar



1604 A Swan's head sword stick



1605 A Yew Wood walking stick with unmarked white metal collar



1606 A Lion's head sword stick



1607 A walking stick with silver collar



1608 A Rosewood walking stick



1609 A Horse measuring stick



1610 A framed and glazed Moulin Rouge poster



1611 A pair of Art Nouveau Royal Dux Amphora vases circa 1890, In good condition



1612 4 Beate's Lp records



1613 A 1758 edition of "The Canon's of Criticism and Glossary of Mr Warburton's Edition of Shakespeare



1614 A set of Victorian brass fire irons



1615 A pair of glass ceiling lights



1616 3 Landscape pictures



1617 A 60cm diameter Cloissonne wall plaque, a/f



1618 An 1890 "Stanley in Tropical Africa" Illustrated and a 1926 "The tomb of Tut-Ankh-Amen" H Carter



1619 18 soft toy animals



1620 A brass fringed ceiling light



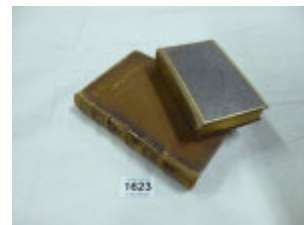
1621 A carved barometer



1622 A gilt framed oval oil on canvas portrait of a child



1623 A 19th century German New Testament and an 1897 copy of Paul Bourget Voyageuses



1624 5 blue and white lidded jars



1625 3 albums of stamps



1626 A hazelnut walking stick with unmarked silver band and a snake walking stick with mother of pearl and bone inlay



1627 A white military belt with bag



1628 An 1894 "Flowers of the Field" Rev. C A Johns and a 1911 volume (re-bound)



1629 A vintage composition doll



1630 42 pieces of crested china



1637 A Lincoln City Transport timetable wall box and Lincoln Transport buttons



1631 A mixed lot of stamps, some in albums



1638 A large Family Bible published by Brightley and Childs, Bungay 1813 and 2 volumes of Cassell's Book of Birds by Thomas Rymer Jones



1632 4 David Bowie LP records



1639 A 19th century violin



1633 7 Stieff animals with buttons



1640 2 Bare knuckle boxing prints



1634 A framed Royal Army Ordnance Corps banner



1641 A carved oak barometer



1635 An old album of postcards



1636 4 volumes of "Association Football" edited by A H Fabian and Geoffrey green, published by Caxton, 1960.



1642 A brass oil lamp with later shade



1647 A mahogany barometer



1643 A mahogany half plate camera with original folding tripod and dark slides



1648 2 albums of postcards



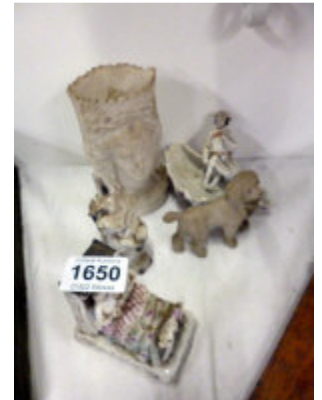
1649 An oil on board "Forest Lakes" signed P DeWint



1644 10 Stieff animals



1650 5 items of Victorian china



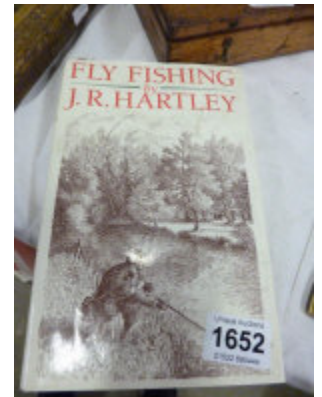
1645 "In Search of the Picturesque" by Docton Syntax, Circa 1880-1910



1651 A Late 19th Century German rolling rule by Gelrae Lee, Portsmouth, (Name J M Alleyne R.N.)



1652 A copy of Fly Fishing by J R Hartley



1646 A framed watercolour seascape bearing the initials T S R.



1653 A late 19th century Graphometer by A R Hahn of Cassel



1654 A large quantity of vintage bottle openers



1655 A Bohemian glass vase



1656 A commiti of London Barometer



1657 A German wall clock



1658 An Art Nouveau column, a/f



1659 A framed photo of The Prince of Wales visit to Lincoln 1927 and 3 other items



1660 9 pieces of miscellaneous glass and china
9 pieces of miscellaneous glass and china



1661 An ornate brass wall clock with 2 weights and embossed pendulum



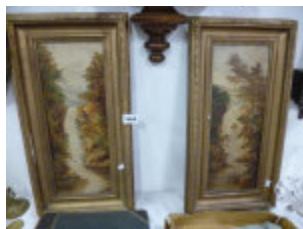
1662 2 volumes 1821-1822 European scenes and Scenes of England for "Tarry at Home" travellers



1663 A Victorian mahogany triple weight Vienna wall clock



1664 A pair of oils on canvas waterfall scenes



1665 A Victorian water colour album of 16 original works of Henley on Thames and surrounding local interest



1666 A cased Victorian laboratory bar magnet by Bater Opticians, London



1667 A Masonic Apron



1668 A Victorian mahogany wall clock



1669 A Seth Thomas wall clock



1670 A Victorian glass and silver plate epergne



1671 6 Film annuals including Picture Show



1672 A large quantity of Railway magazines



1673 A box of LP records including Rolling Stones



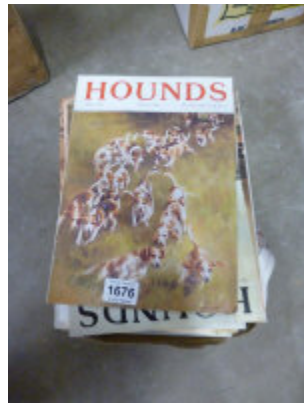
1674 10 books on British activity



1675 20 volumes of The Connoisseur



1676 A large quantity of Hounds magazine



1683 2 Wendy Boston Basil Brush toys



1677 A quantity of old books including Encyclopaedia of Sport



1684 A Sculpture of Champion Boxer dog mother and daughter by Doris Lindner (Royal Worcester Artist)



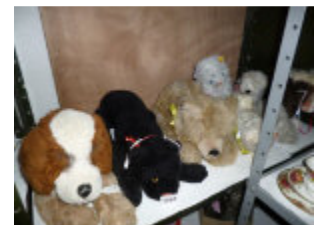
1678 A quantity of good books



1685 A George V Silver Jubilee Windsor Castle mantel clock



1686 8 Stieff toys



1679 2 model planes, 3 model trains and one other



1687 A quantity of ice skating blades



1680 A quantity of miscellaneous spools, Bobbins and shuttles



1681 A mahogany stool



1688 2 Beatels scrap books and an Adam Faith scrap book



1682 A quantity of old camera's including Rollieflex SL35



1689 3 Old Pulley's and a driving swivel tree



1690 A framed floral arrangement embroidery



1691 An oil on board woodland scene with hiker, initialled, 39 x 29cm



1692 A still life floral print by Edwin Byatt, 58cm x 46cm



1693 A still life print of copper jug etc, 60cm x 46cm



1694 2 Limited Edition Beagle prints both signed by artist's, (52 x 39cm and 40cm x 29cm)



1695 A limited edition fox hunting print by Peter Dunithorne



1696 A pair of framed fabric pictures of Oriental scenes (1 glass a/f)



1697 A framed limited edition golfing scene print by Hayden Martin



1698 A Siamese cat Acrylic on board signed D Walker



1699 An oil on board "Langdale Pikes, cumbria" 1980, signed Grossi



1700 An Acrylic on board "East Lane Corringham" signed D Walker



1701 A Kitchen scene print by Fred Elwell



1702 An Original acrylic on board "Blacksmith shop" signed Brian Roberts



1703 A limited edition Elephant print signed Michael Kitchen Hule



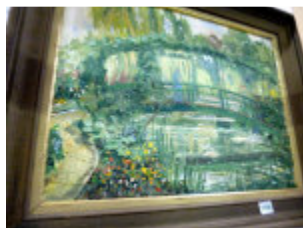
- 1704 A limited edition
Rhino print signed
Michael Kitchen Hule



- 1705 A pair of Stanley
Berkley prints "A
Friend in Need" and
"The Deserter"



- 1706 An oil on
canvas "Monet's
Garden" unsigned



- 1707 A framed and glazed
watercolour "Italian
Lakes"



- 1708 A farm scene oil on
canvas
A farm scene oil on
canvas



- 1709 A framed collage of 5
fox hound puppies
By Cecil Aldin



- 1710 A print entitled "On
the Road to Covert"
by B Nielson



- 1711 A limited edition print
"The Huntsman's
dream"



- 1712 2 still life unsigned
oils on canvas



- 1713 A set of 4 Cries of
London prints



- 1714 A Cecil Aldin hunting
print



- 1715 A forest landscape
oil on canvas signed
Barner



- 1716 A lithograph of a
woman with child
and kittens, circa
1880-1890



1717 2 gilt framed floral pictures



1718 A pair of pokerwork pictures in gilt frames in the style of John Gilpin



1719 An engraving of Queen Victoria inspecting her troops



1720 A mountain scene watercolour



1721 A watercolour of Lincoln Cathedral by B Parish



1722 An acrylic painting of fishing boats



1723 An acrylic painting of guards



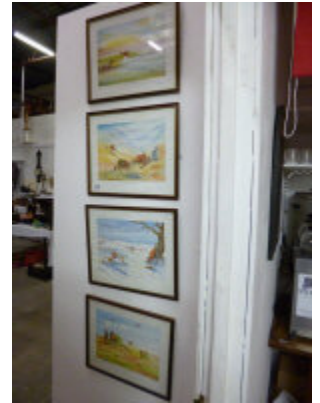
1724 An oil painting of a hunting scene by Chas J Simkin



1725 A framed seascape



1726 A set of 4 Christopher Hope prints, shooting scenes etc



1727 A rural landscape oil on board by L Willoughby 1980, 201cm x 79cm



1728 An oak drop leaf table



1729 A rural landscape oil on board by L Willoughby



1730 An autumnal landscape oil on board by L Willoughby 1971



1731 A French long case clock



1737 A painted 3 door wardrobe with drawer base



1732 A French long case clock

1733 A mahogany inlaid 3 piece bedroom suite

1734 An old pinball machine, a/f



1738 An oak glazed bookcase



1735 A Georgian mahogany wash stand



1739 A coin operated Dalek ride



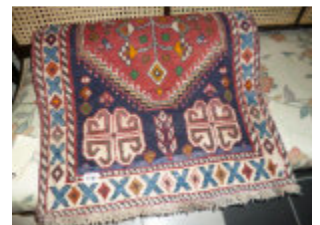
1740 A cane backed sofa



1736 A large blue glazed Angel figure



1741 A red ground rug, 201x 67cm



1742 A carved table



1747 A bronze figure of girl with hoop on marble base



1743 A set of 5 dining chairs and one other



1748 A pair of Highland watercolours signed Frank Holme



1744 An oil painting of Gainsborough Old Hall bearing the signature H Edwin Dobbs, 1907



1749 A Royal Signals uniform



1745 A china cabinet



1750 A ceiling light with funnel and shade



1746 A mahogany display cabinet



1751 A Victorian hanging oil lamp with copper font



1752 A brass ceiling light



1753 A Chinese bird decorated plate



1754 A Bedroom chair



1755 A mahogany kneehole desk



1756 A Victorian metal coal box with shovel



1757 A mahogany salon chair



1758 A Victorian mahogany drop leaf table on tapered legs



1759 A cast iron fire grate



1760 A period oak door



1761 A superb Japanese Wedding Kimona decorated with birds



1762 A superb Japanese Wedding Kimona decorated with fans



1763 An oak gate leg table



1764 A Windsor arm chair



1770 A mahogany 2 drawer side table
A mahogany 2 drawer side table



1771 An oak stool



1765 A bronze figure of a dancer on marble base



1772 A washboard, 2 washing dollies and folding clothes airer



1773 A 2 over 2 painted chest of drawers



1766 A Vintage doll's house



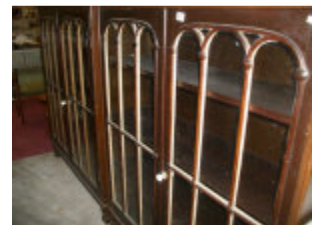
1774 2 elephant figures



1767 A painted 2 over 3 chest of drawers



1775 A pair of mahogany glazed cabinets



1768 A mahogany astragal glazed cabinet



1776 A bronze nude figure



1769 A copper topped table



1777 A large Oriental brass item



1778 An inlaid hexagonal nest of 6 musical tables all playing different tunes



1779 A large oak settle



1780 A large red patterned rug



1781 A red patterned rug, 190x63cm



1782 A mahogany console table



1783 A Victorian walnut veneered work table



1784 A French "Lit en Bateau" single bedstead



1785 An oval inlaid 2 tier table
An oval inlaid mahogany 2 tier table



1786 A Wedgwood 'Grecian' pattern dinner set (27 pieces)



1787 An oval mahogany table



1788 An oak standard lamp



1791 An Avery penny in slot scale



1792 An oak bureau



1793 An oak overmantel mirror



1794 A marquetry inlaid D shaped console table



1795 A print entitled "Crossing the Brayford Wharf" commemorating 150 years of railways signed Brian Chapman



1796 A Victorian folding campaign chair



1797 A pair of full sized figures

1789 62 pieces of Royal Doulton Berkshire pattern dinnerware



1790 An extending wind out dining table with 2 leaves and handle



1798 25 soft toys including Stieff



1806 A pair of landscape watercolours signed Rev Durrans 1988/89



1799 A mahogany oval table with brass Lions paw feet



1807 21 World of Beatrix Potter figures, boxed



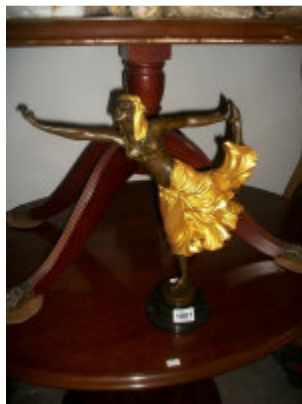
1800 A Victorian mahogany oval table
A Victorian mahogany oval table



1808 A Wind up gramophone, a/f



1801 A bronze figure of a dancer.



1809 An acoustic guitar



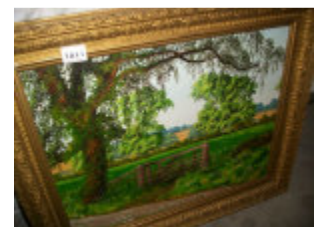
1810 3 blue and white willow pattern meat platters and 2 plates



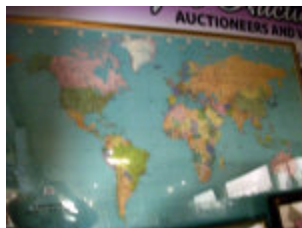
1802 A framed ship building print



1811 A gilt framed country scene in oil



1803 A large framed world map



1812 A framed lake scene



1804 A framed print "The Roofs of York" signed Geo H Downing



1813 An oak dresser



1805 A framed watercolour watermill cottage signed H x Cooper 1958



1814 A quantity of Aynsley china



1815 A Satin Walnut 3 piece bedroom suite



1816 A collection of pottery Stilton jars



1817 4 items of glassware including atomisers



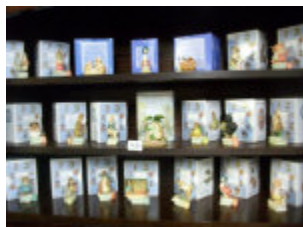
1818 A large mahogany wall unit



1819 Approximately 30 items of crested china



1820 21 World of Beatrix Potter figures, boxed



1821 Approximately 30 items of crested and souvenir china



1822 An old carved wood coffin



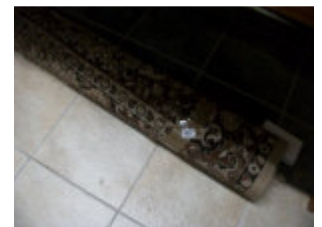
1823 A red patterned rug,



1824 A large 3 drawer table



1825 A large beige and brown rug



1826 A Lion skin rug



1827 A 2 over 2 chest of drawers



1828 A pair of oil on board lake scenes signed J E Harkness 1909



1829 A mahogany 16 drawer filing chest



1830 An oak drop leaf table



1831 A white mink jacket



1832 A standard lamp with shade



1833 A 6 light glass chandelier



1834 A framed and glazed cash's silk depicting lovers on a swing



1835 A bronze figure of a dancer



1836 A 2 over 3 chest of drawers



1837 A pine kitchen table with drawer



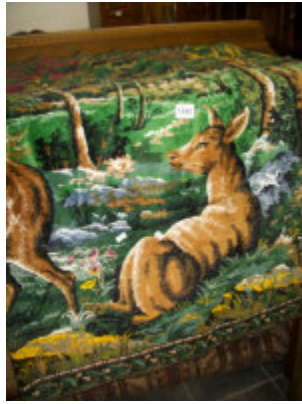
1838 38 pieces of Royal Albert Old Country Roses china



1839 A purple day bed



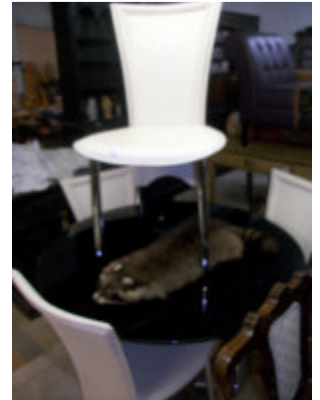
1840 A 'Deer' wall hanging



1847 A carved oak desk



1848 A glass top table and 4 retro style chairs



1841 A 2 drawer pine table



1849 A raccoon doorstop



1842 A floral Chinese rug, 183 x 120cm



1843 A blue and terracotta patterned rug, 320 x 220 cm



1850 A Victorian nursing chair



1844 6 pottery fish vases



1845 A Georgian carved oak bureau bookcase



1851 A mahogany fold over table



1852 A set of Jockey scales



1846 A mixed lot of old linen



1853 A mahogany chaise longue upholstered in green



1854 An inlaid ivory and rosewood chess top table



1855 A set of 6 mahogany chairs comprising 2 carvers, 2 dining and 2 nursing chairs



1856 An oak 2 over 3 chest of drawers



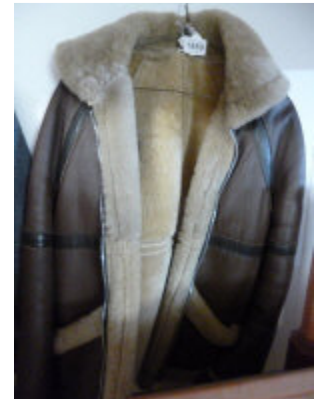
1857 An oak bureau



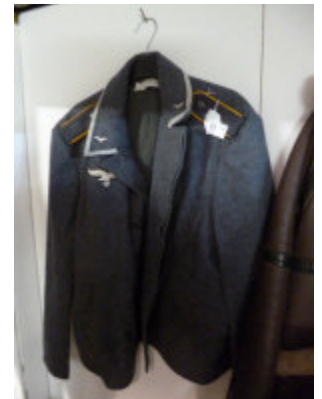
1858 An army greatcoat



1859 A leather flying jacket



1860 A WW2 German officer's jacket



1861 An officer's blazer



1862 A sheepskin jacket



1867 A display cabinet



1863 A Swedish army jacket



1868 A mahogany bureau bookcase



1864 A Replica WW2 German Gestapo jacket



1869 A Victorian mahogany linen press



1865 A large Elizabethan style doll's house and florist shop complete with furniture and fittings



1870 23 pieces of Royal Doulton Countess pattern china, some a/f



1866 A 2 drawer oak table



1871 A pair of painted doors



1872 A mahogany desk



1873 An oak long case clock



1878 A vintage clothes airer



1874 A carved mirror backed sideboard



1879 A set of 6 chairs for restoration



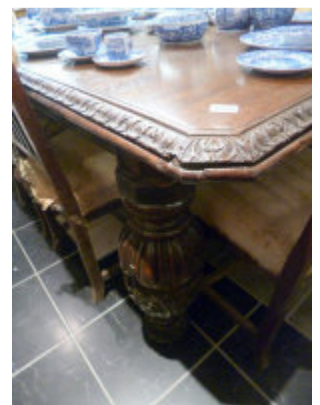
1875 A large quantity of Royal Albert Old Country Roses china



1876 A gilt framed arch top mirror



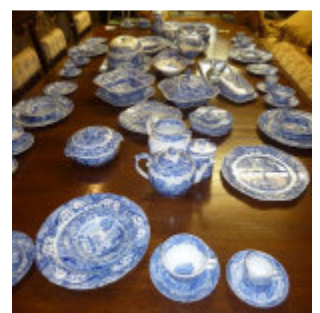
1880 A Victorian oak Jacobean style table on heavy carved legs and with 5 leaves



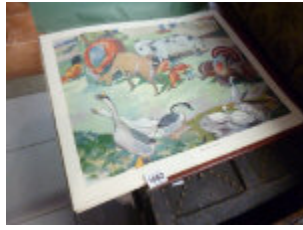
1877 A large Renaissance style print in gilt frame



1881 Approximately 80 pieces of Spode Blue and White dinner ware



1882 A folder of approximately 36 educational animal prints



1883 A large old coffer



1884 An unusual standard lamp, a/f



1885 A circular table with leather inset



1886 A Walnut what not with barley twist supports



1887 A good quality 3 piece suite comprising sofa, 2 chairs and large stool



1888 A large Cantonese vase



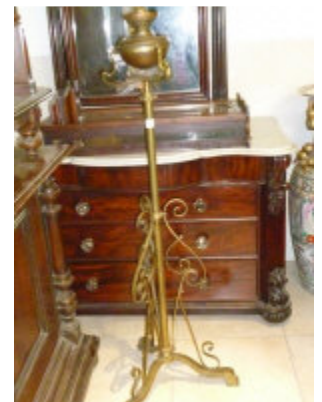
1889 A mahogany mirror back dressing table with marble top



1890 A mahogany wall clock



1891 A Victorian brass standard oil lamp



1892 A Victorian penny in slot polyphon (no works) with quantity of discs



1898 An inlaid 2 door cabinet



1893 An oval gilt framed mirror



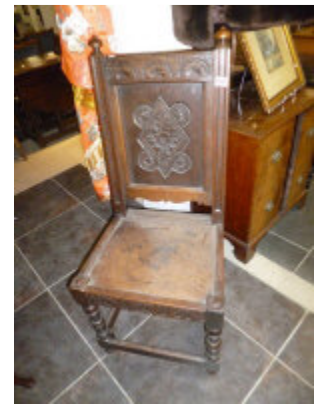
1899 A brown fur coat



1894 17 pieces of Royal Albert Moss Rose tea ware



1900 A carved oak chair



1895 A teak sideboard



1896 An ebonised envelope table



1901 A mahogany Sutherland table with shell inlay



1897 A gilt framed cattle scene

